



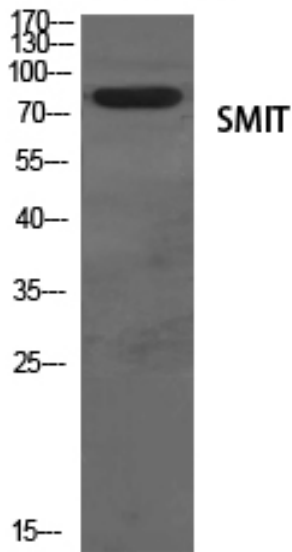
SMIT Polyclonal Antibody

Catalog No	YP-Ab-16499
Isotype	IgG
Reactivity	Human;Mouse;Rat
Applications	WB; ELISA;IHC
Gene Name	SLC5A3
Protein Name	Sodium/myo-inositol cotransporter
Immunogen	The antiserum was produced against synthesized peptide derived from human SLC5A3. AA range:221-270
Specificity	SMIT Polyclonal Antibody detects endogenous levels of SMIT protein.
Formulation	Liquid in PBS containing 50% glycerol, 0.5% BSA and 0.02% sodium azide.
Source	Polyclonal, Rabbit,IgG
Purification	The antibody was affinity-purified from rabbit antiserum by affinity-chromatography using epitope-specific immunogen.
Dilution	WB 1:500-2000;IHC-p 1:50-300; ELISA 2000-20000
Concentration	1 mg/ml
Purity	≥90%
Storage Stability	-20°C/1 year
Synonyms	SLC5A3; Sodium/myo-inositol cotransporter; Na(+)/myo-inositol cotransporter; Sodium/myo-inositol transporter 1; SMIT1; Solute carrier family 5 member 3
Observed Band	80kD
Cell Pathway	Membrane; Multi-pass membrane protein.
Tissue Specificity	Placenta,
Function	function:Prevents intracellular accumulation of high concentrations of myo-inositol (an osmolyte) that result in impairment of cellular function.,similarity:Belongs to the sodium:solute symporter (SSF) (TC 2.A.21) family.,
Background	function:Prevents intracellular accumulation of high concentrations of myo-inositol (an osmolyte) that result in impairment of cellular function.,similarity:Belongs to the sodium:solute symporter (SSF) (TC 2.A.21) family.,
matters needing attention	Avoid repeated freezing and thawing!
Usage suggestions	This product can be used in immunological reaction related experiments. For more information, please consult technical personnel.



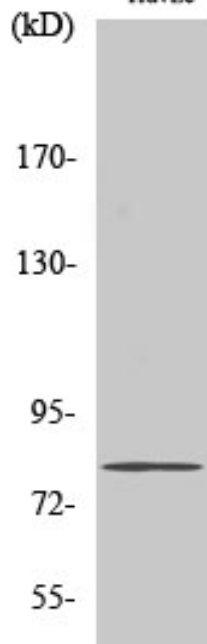
Products Images

Rat-kidney

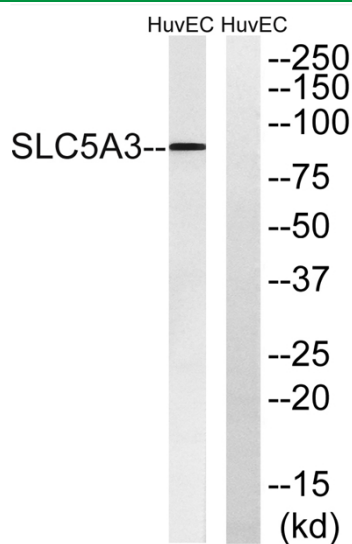


Western Blot analysis of various cells using SMIT
Polyclonal Antibody diluted at 1:500

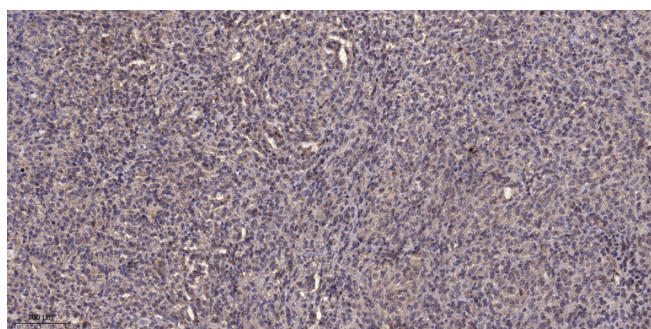
HuvEc



Western Blot analysis of HuvEc cells using SMIT
Polyclonal Antibody diluted at 1:500



Western blot analysis of lysates from HUVEC cells, using SLC5A3 Antibody. The lane on the right is blocked with the synthesized peptide.



Immunohistochemical analysis of paraffin-embedded human Colon cancer. 1, Antibody was diluted at 1:200(4° overnight). 2, Tris-EDTA,pH9.0 was used for antigen retrieval. 3,Secondary antibody was diluted at 1:200(room temperature, 45min).